



CoastWEB

PI: Nicola Beaumont

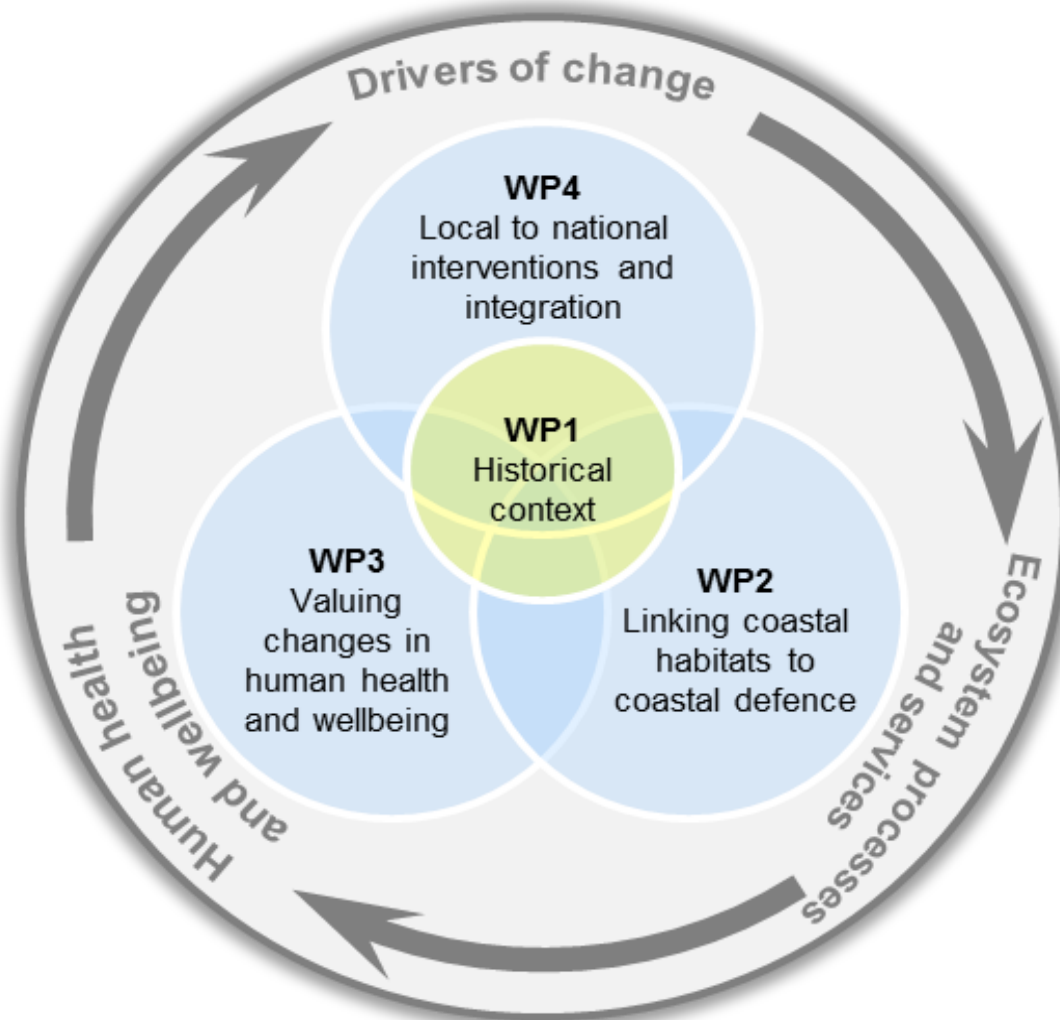


Valuing the contribution which saltmarshes make to human health and wellbeing



Nicola Beaumont, nijb@pml.ac.uk, @NicolaBeaumon17

The Initial Idea



Need Interdisciplinary Approaches





The CoastWEB Team



Prifysgol Abertawe
Swansea University



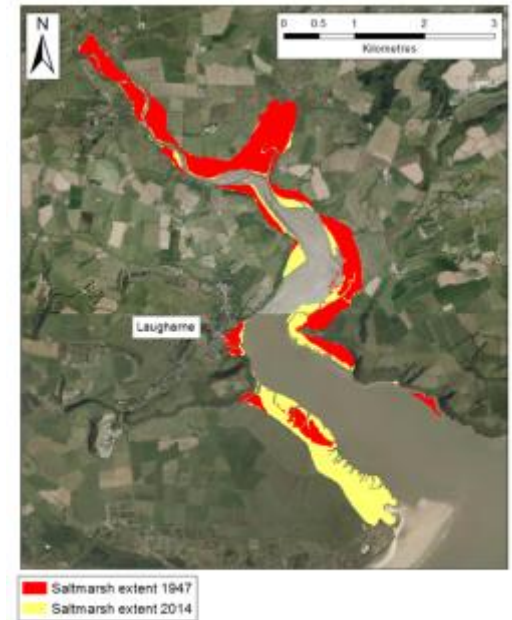
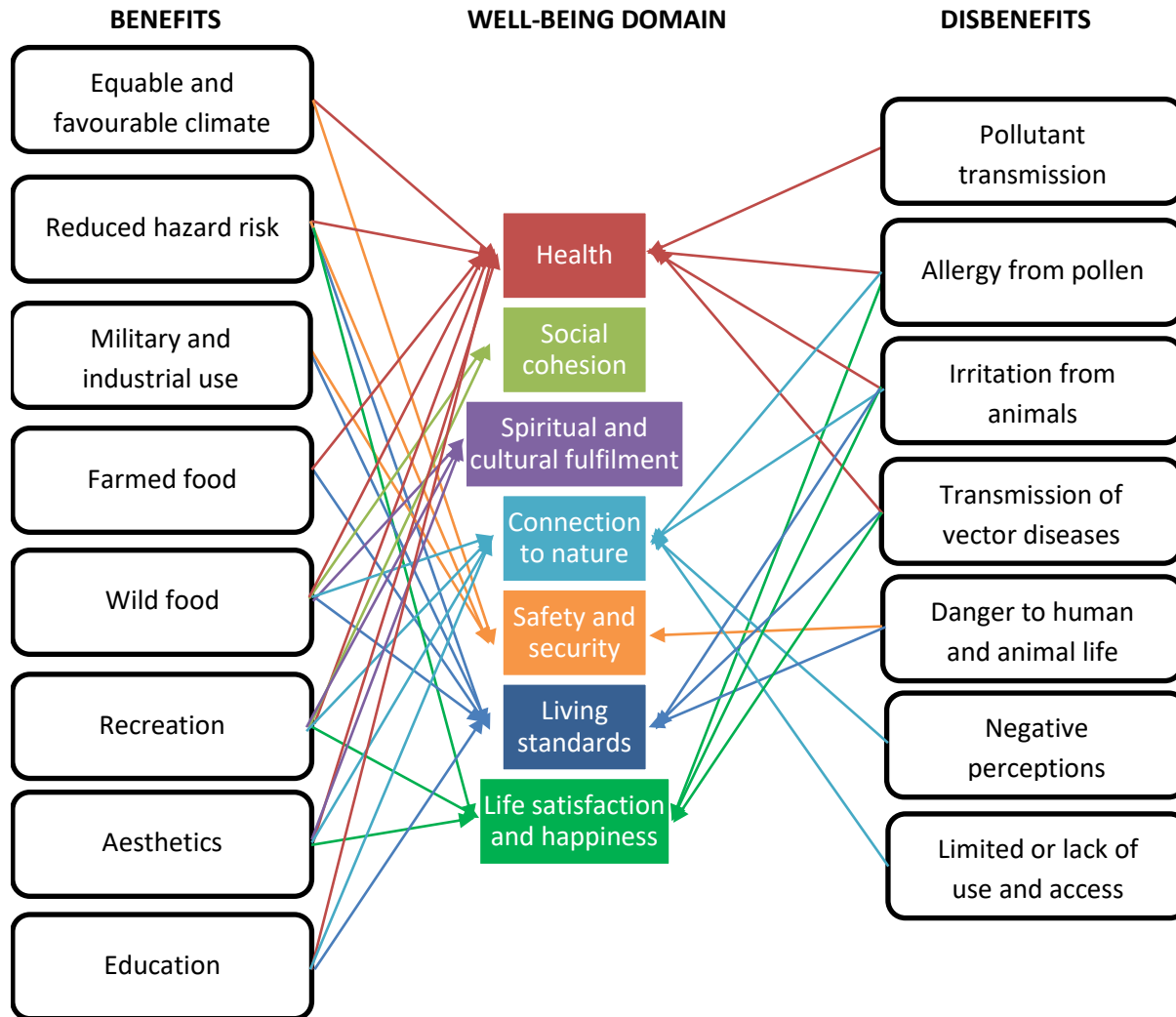
PRIFYSGOL
BANGOR
UNIVERSITY

UNIVERSITY OF
EXETER



@Coastwellbeing

Linking ES and health and well-being: salt marshes case



RESEARCH ARTICLE

A framework linking ecosystem services and human well-being: Saltmarsh as a case study

Olivia R. Bredon¹ | Angus Garbutt² | Martin Skov³ | Iris Möller⁴ | Meghan Alexander⁵ | Rhoda Ballinger⁶ | Kayleigh Wyles⁶ | Greg Smith⁷ | Emma McKinley⁸ | John Griffin⁹ | Merryn Thomas⁹ | Kate Davidson⁸ | Jordi F. Páges⁹ | Simon Read¹⁰ | Nicola Beaumont¹

Multiple value types at multiple scales



@Coastwellbeing
@nicolabeaumont17

Local



Local to
national
interventions
and
integration

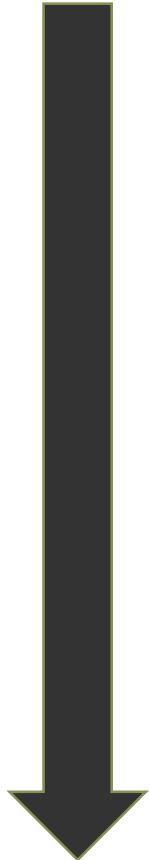
Linking coastal
habitats to
coastal defence

Valuing changes in
human health and
wellbeing as a result of
saltmarsh interventions



Qualitative

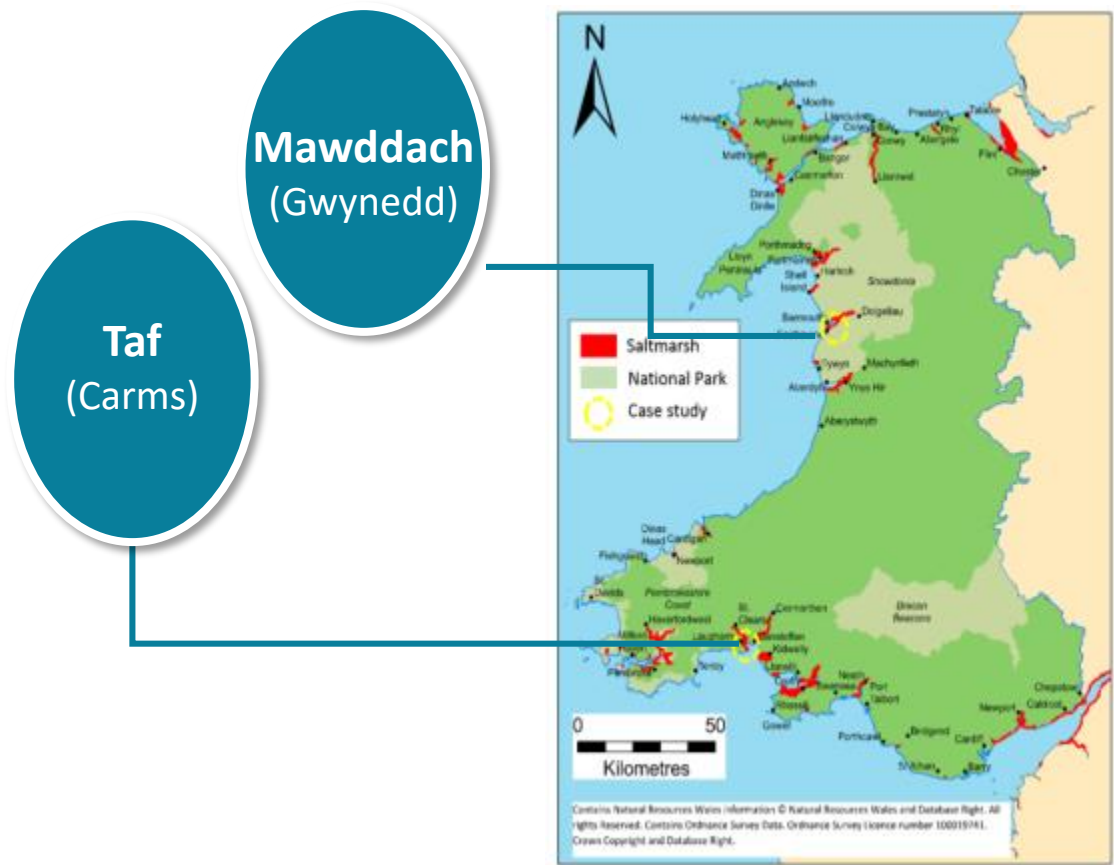
Quantitative



National

Case Study Sites

- National scale & local scale analysis
- X2 in-depth case studies – Mawddach and Taf estuaries
- Additional estuaries – Loughor, Neath, Dee and Glaslyn



Interdisciplinary working

- Disciplinary excellence
Simon (artist) : “not to be instrumentalised to decorate a scientific project”
- Communication
“A framework linking ecosystem services and human wellbeing”
- Respect and relationships



“The result are several collaborations, that were not even in the project call, but that are truly interdisciplinary and exciting – This wouldn’t have occurred to us, if it hadn’t been for the different views I have as a natural scientist (and a bit idealistic natural scientist) compared to the pragmatic views of the social fellow.”